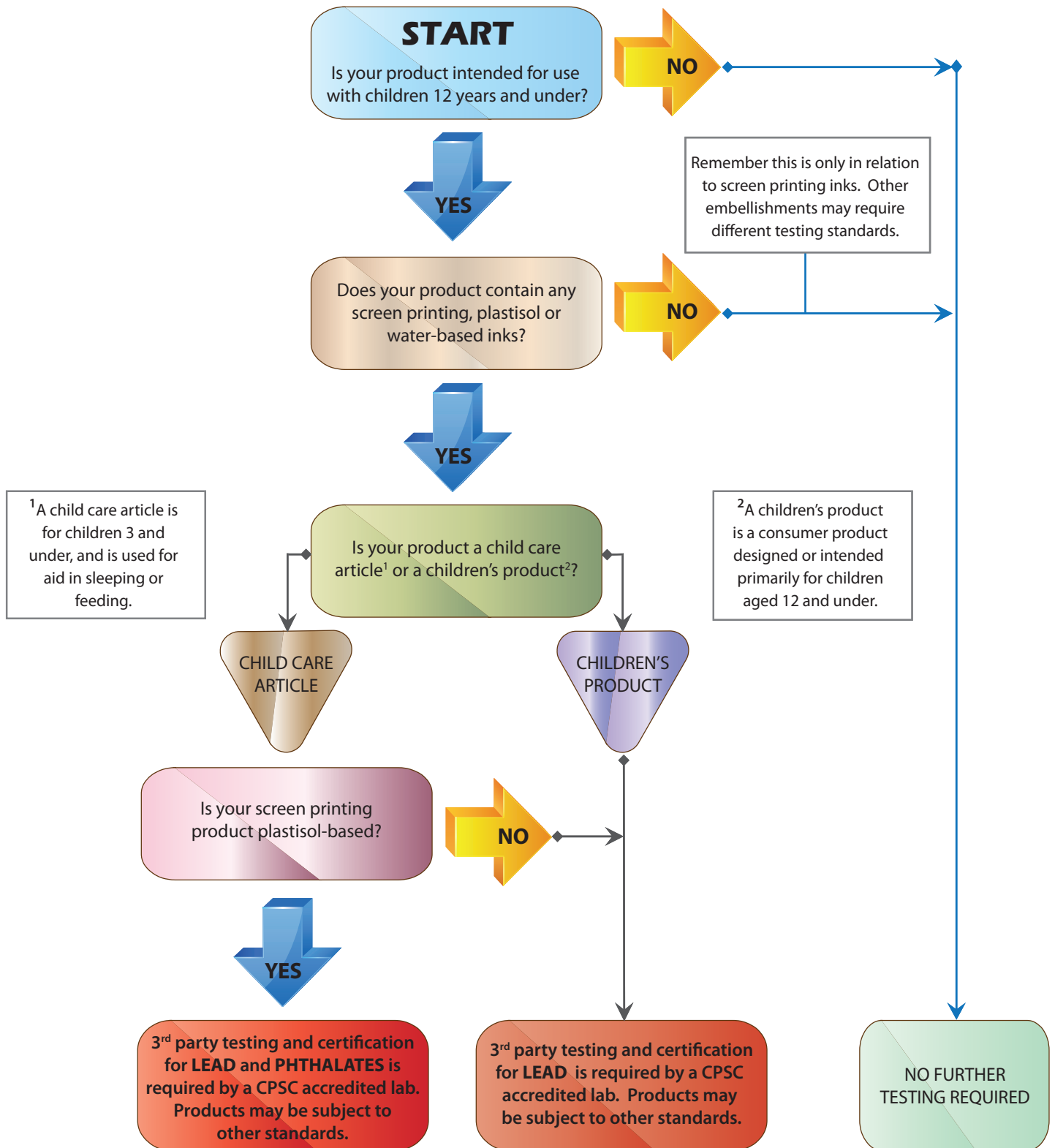


# CPSIA Testing Flow Chart



This flow chart reflects International Coatings' understanding of the Consumer Product Safety Improvement Act (CPSIA) of 2008 as it affects International Coatings' product line. This flow chart is not to be taken as legal advice. To determine specific compliance requirements, visit [www.cpsc.gov](http://www.cpsc.gov).

# CPSIA Testing Flow Chart Details

## Frequently Asked Questions

### What is the Consumer Product Safety Improvement Act and how does it affect me?

The Consumer Product Safety Improvement Act (CPSIA) of 2008 regulates the amount of lead and phthalates in children's products and certain child care items. As of January 1, 2012, all screen printers and/or manufacturers who add "extra value" to a textile that could be considered a children's product and/or a child care article will be responsible for certifying that their products comply with the CPSIA of 2008. To view a copy of the law, go to [www.cpsc.gov/cpsia.pdf](http://www.cpsc.gov/cpsia.pdf).

### What are the definitions of a children's product and child care item?

A "children's product" is a consumer product designed or intended primarily for children 12 years of age or younger. Several factors are considered in determining whether a product falls under this definition. To learn more, go to <http://www.cpsc.gov/about/cpsia/faq/children.html>

A "child care article" is a consumer product designed or intended by the manufacturer to facilitate sleep or the feeding of children age 3 and younger, or to help those children with sucking or teething. For example, a pacifier/teether would be an item that would help a child with sucking or teething; a bib would facilitate feeding; a crib mattress would facilitate sleeping as would pajamas and crib sheets.

### What is a General Certificate of Conformity (GCC)?

A General Certificate of Conformity (GCC) is a document which certifies, based on a test of each product or a reasonable testing program, that the product complies with all statutes, regulations, rules, bans, or standards under any law enforced by the Consumer Product Safety Commission (CPSC). To learn more, go to [www.cpsc.gov/about/cpsia/faq/elecfaq.pdf](http://www.cpsc.gov/about/cpsia/faq/elecfaq.pdf)

### On what does my certification have to be based?

The general conformity certification must be based on a test of each product or a reasonable testing program.

### Are small businesses exempt from providing certification?

No, but the law does provide some relief through a Small Batch Manufacturers Registry. The Small Batch Manufacturers Registry is the online mechanism by which Small Batch Manufacturers can identify themselves to obtain relief from certain third party testing requirements for children's products. A GCC is still required.

There are two criteria that you must meet. First, your total gross revenue from the sale of all consumer products in the prior calendar year (e.g., calendar year 2011 sales to qualify for calendar year 2012) is \$1 million or less. Second, no more than 7,500 units of the same product were manufactured in the prior calendar year.

For more information on qualifying and complying as a Small Batch Manufacturer, go to [www.cpsc.gov/smallbatch](http://www.cpsc.gov/smallbatch). For assistance and guidance through the CPSC Small Business Ombudsman, go to <http://www.cpsc.gov/businfo/smbus.html>.

This flow chart reflects International Coatings' understanding of the Consumer Product Safety Improvement Act (CPSIA) of 2008 as it affects International Coatings' product line. This flow chart is not to be taken as legal advice. To determine specific compliance requirements, visit [www.cpsc.gov](http://www.cpsc.gov).